

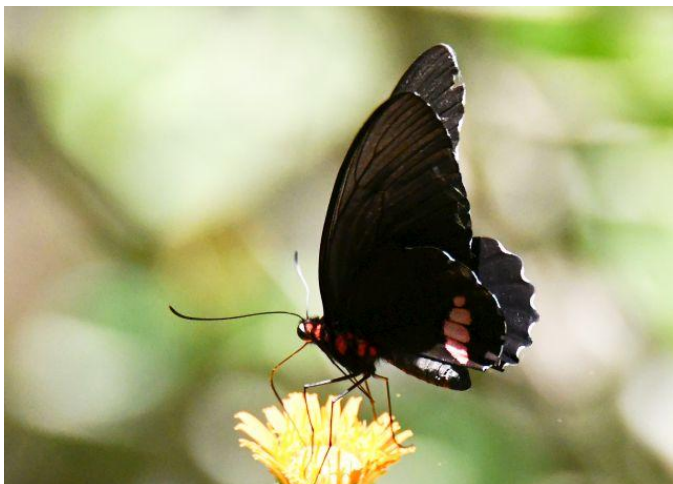
## Panama Butterflies Seen

In the tropics, butterflies outnumber birds. They become more active midday when birds tend to rest so it is easy to study both. Although my Naturalist Journeys trip to Panama (Feb 20-28, 2026) was focused on birds and mammals, I was able to photograph a number of butterflies. I used Glassberg's *Butterflies of Mexico and Central America* 2nd ed. (2017) and several online databases (e.g., iNaturalist) to identify them. Trip leader Robert Gallardo from Honduras was also a resource. If I did not get a suitable photo, I substituted one from iNat, noting source. English names are not standardized and Latin names may change over time. Consider my ID as tentative.

## Swallowtails



Western Giant Swallowtail (*Heraclides rumiko*)



Emerald-patched Cattleheart (*Parides sesostris*)

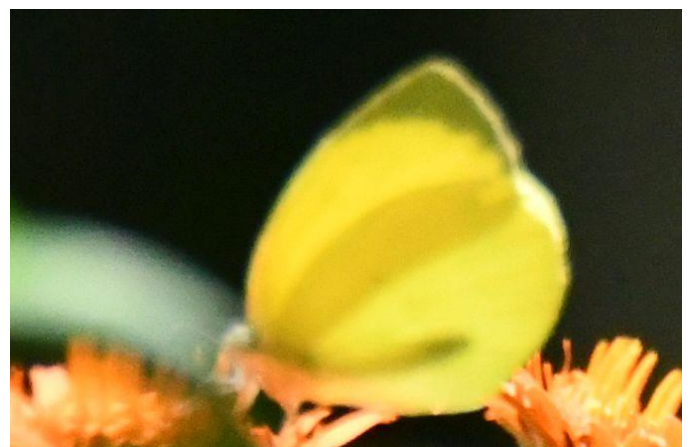
## Whites & Yellows



Cross-barred White (*Itabalia demophile*)



Cloudless Sulphur (*Phoebis sennae*)



Pale Yellow (*Eurema venusta*)

## Hairstreaks



Mimosa Yellow (*Eurema nise*) ?



Chiapis Stripe-Streak (*Panthiades phaleros*)



Cattleheart White (*Archonias brassolis*)



Pearly-gray Hairstreak (*Siderus tephaes*)



Cattleheart White (*Archonias brassolis*)



Pearly-gray Hairstreak (*Siderus tephaes*)

## Metalmarks



Empusa Hairstreak (*Ostinotes empusa*)



Orange-patched Eyemark (*Perophtalma tullius*)



Red-spotted Hairstreak (*Tmolus echion*)



Satyr Metalmark (*Leucochimona lepida*)



Mexican Arcas (*Arcas cypria*) iNaturalist



Cloaked Scintillant (*Detrivora barnesi*)

## Brushfoots



Iris Calephelis (*Calephelis iris*)



Confusa Tigerwing (*Methona confusa*)



Creamy Metalmark (*Nymphidium cachrus*) ?

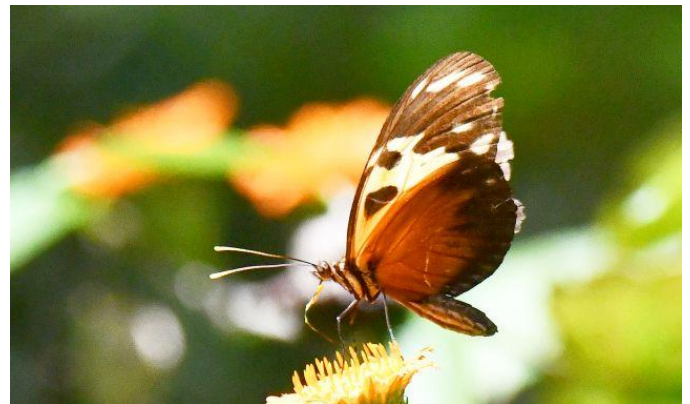


Julia Heliconian (*Dryas julia*)



Calligrapher's Metalmark (*Symmachia calligrapha*)

Robert Gallardo



Tiger Longwing (*Heliconius hecale melicerta*)



Postman (*Heliconius melpomene*)



Zebra Longwing (*Heliconius charithonia*)



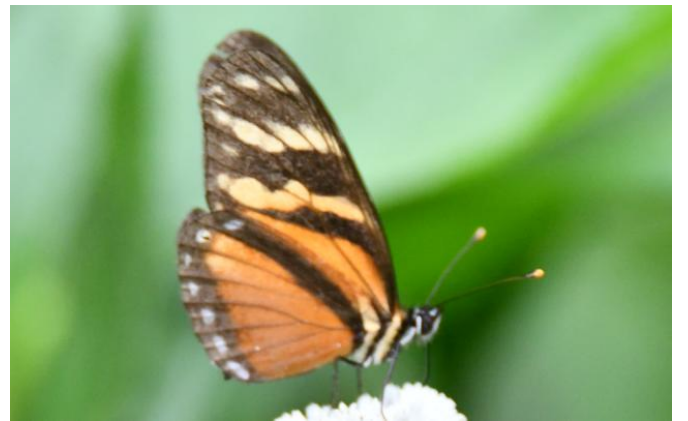
Red Postman (*Heliconius erato*)



Variable Crescent (*Eresia ithomiodes*)



Zebra Longwing (*Heliconius charithonia*)



Variable Crescent (*Eresia ithomiodes*)



Black Crescent (*Phycoides ptolyca*)



White Peacock (*Anartia jatrophae*)



Banded Peacock (*Anartia fatima*)



Common Mangrove Buckeye (*Junonia genoveva*)  
*iNaturalist*



Automedon Giant Owl (*Erphanis lycomedon*)



Automedon Giant Owl (*Erphanis lycomedon*)



Menelaus Morpho (*Morpho menelaus*) iNaturalist



Spot-celled Sister (*Adelpha basiliodes*)



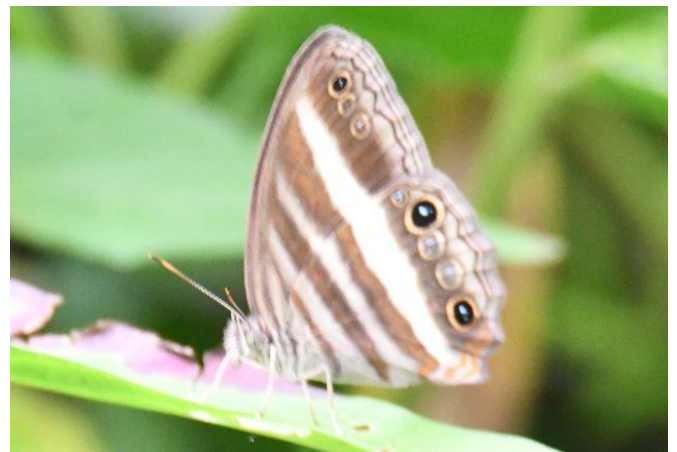
Cypris Morpho (*Morpho cypris*) iNaturalist



Northern Green Longwing (*Philaethria diatonica*)



Rusty-tipped Page (*Siproeta epaphus*)



Double-white Satyr (*Pareuptchia ocirrhoe*)

# Skippers

## Dicot Skippers



Satyr sp. (*Magneptychia* sp.)



Long-tailed Skipper (*Urbanus proteus*)



Renata's Satyr (*Ypthimoides renata*)



Small-spotted Flasher (*Cecropterus egregius*)



Carolina Satyr (*Hermeuptchia soaybius*)



Common Ghost-Skipper (*Phanus marshalli*)



Common Ghost-Skipper (*Phanus marshalli*)



Spreadwing sp.



Spreadwing Skippers



Atahuallpai Sootywing (*Bolla atahuallpai*)



Stoll's Flat (*Celaenorrhinus eligius*)



Blue-studded Skipper (*Sostrata bifasciata*)

Grass-Skippers



Radiant Brown-Skipper (*Callimormus radiola*)



Caterpillars



Catterpillar on Blue Porterweed at Canopy Lodge

# Moths

A “butterfly” that lacks a ball at the end of its antennae is actually a moth. There are about 6 times as many moths as butterflies and relatively few resources for ID. Day flying moths tend to be brightly colored. Most moths are nocturnal but may be attracted to a hanging sheet that is illuminated. One ID strategy is to conduct an iNaturalist search for each common superfamily (or family since there are 1,500+ species in the Owlet Moth superfamily alone in Panama) and review it manually. Google Lens can sometimes help get to the family or genus but lacks a way to focus the search and is error prone. I find multiple strategies necessary but recognize that many have not been described yet. The following are tentative IDs.

## Geometrid & Swallowtail Moths (*Geometridea*)



(*Erycinopsis diaphana*) [a day flying moth]



(*Chloropteryx dealbata*)



(*Palyas* sp.)



(*Pantalene* sp.) ?



(*Iridopsis* sp.)



(*Pero amanda*) ?

Carpenter, Leopard, Goat Moths  
(*Cossoidea*)



(*Iridopsis* sp.)



(*Morpheis pyracmon*)

Hawk, Sphynx, Emperor Moths  
(*Bombycoidea*)



(*Pero amanda*) ?



Panama Moth (*Hylesia rufipes*) ?



Fig Sphinx Moth (*Pachylia ficus*)

Unidentified

